

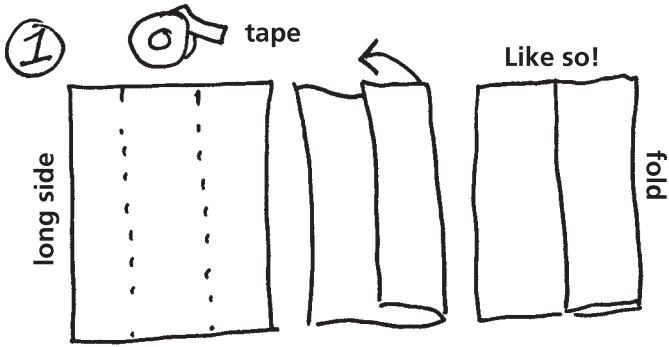
MAKE A CHEF'S HAT

(with help from an adult)

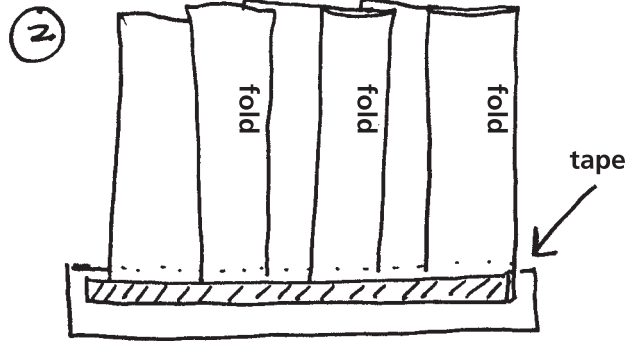


Supplies:

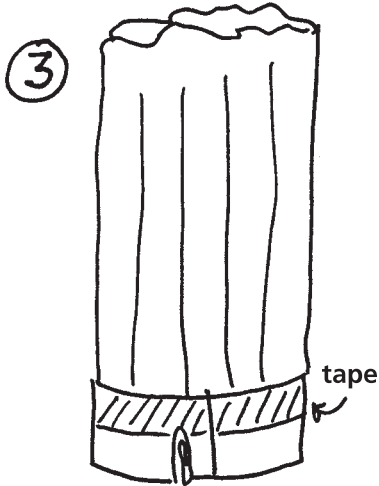
- 3 Sheets tissue paper—classic white or colors
- 1 hat band, 26" x 3"—construction paper or tag board
- 1 large paper clip



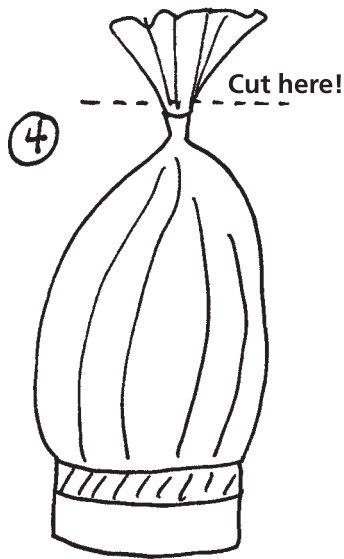
Fold page into thirds.



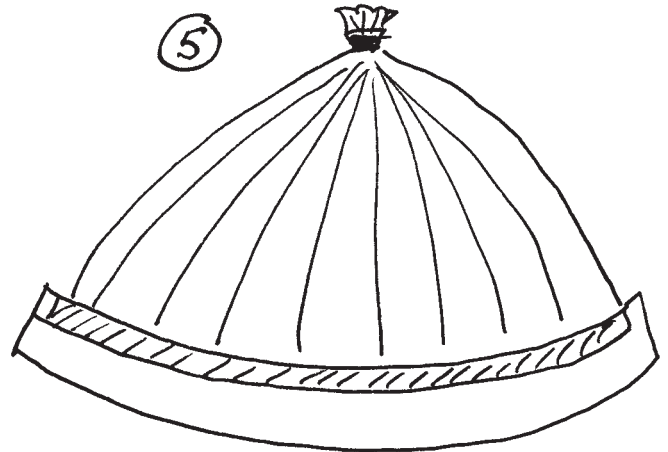
Lay on hat band. Overlap generously. Tape in place as shown.



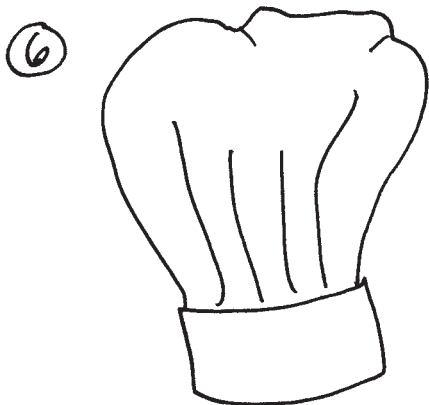
Circle into hatband, tape side out. Paper clip. Tape.



Gather top 1/4" of tissue tightly. Cut off above tape.



Undo paper clip.



Tape side in, bend into hatband again. Size to fit. Tape in place. Adjust! Tape gaps! Hat done!

